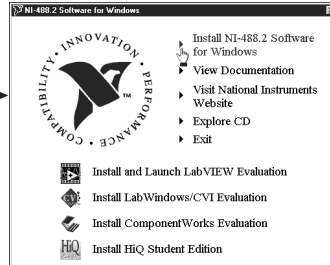


GETTING STARTED

PCI-8212 for Windows 98

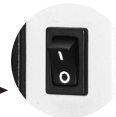
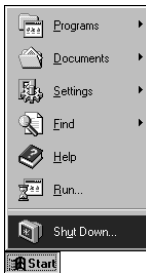
1

Insert the NI-488.2 CD, then choose **Install NI-488.2 Software for Windows**.



2

Shut down, then power off computer.



Power Off
Computer

3

Install hardware* and cables, then power on computer.



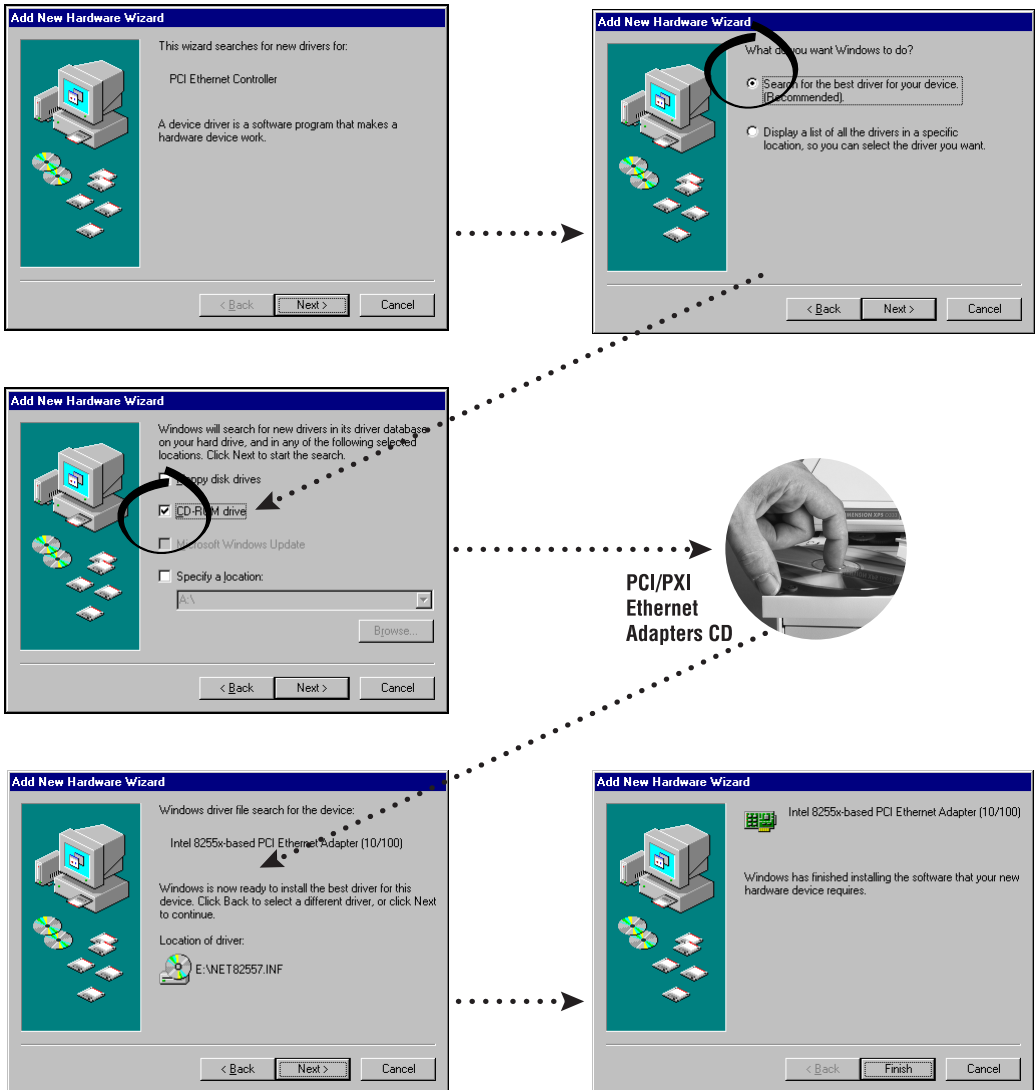
Power On
Computer

* **For Help** installing your hardware, refer to the *PCI-GPIB* topic in the *GPIB Hardware Guide* (available on the NI-488.2 for Windows CD through *View Documentation*).

4

Install the Windows 98 Driver.*

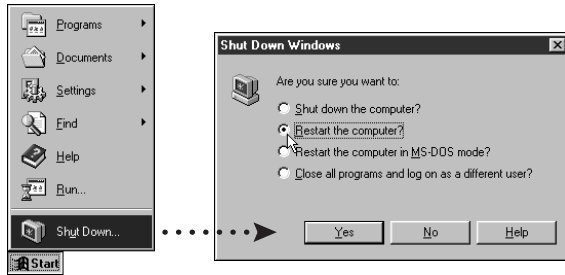
Newer versions of Windows 98 already include the driver for the Ethernet adapter, in which case you may only be prompted for the Windows 98 CD to complete the installation. However, if the Add New Hardware Wizard appears, click **Next** and follow the prompts as shown below. Insert the PCI/PXI Ethernet Adapters CD and specify the CD drive as the source path from which to copy the files. Select the Intel 8255x-based PCI Ethernet Adapter



* **For Help** installing your driver, refer to the *PCI/PXI Ethernet Adapters Installation Guide* (available on the PCI/PXI Ethernet Adapters CD). The installation guide also contains cabling instructions and troubleshooting tips.

5

Restart computer, then connect to your network.



6

Run NI-488.2 Getting Started Wizard.





www.ni.com/support
www.ni.com/ask

Tel: (512) 795-8248 • Fax: (512) 683-5678 • ftp.ni.com

© Copyright 2000 National Instruments Corporation. All rights reserved. Product and company names mentioned herein are trademarks or trade names of their respective companies.



322725A-01

Jul00